

FP2 - TIP 'O THE WEEK # 111

SMOKE ALARMS



Smoke Alarms.

FirePro lets you track smoke alarms in your area and there are a variety of fields available for customization by your department. These can be very useful for statistical reporting later on.

The Smoke Alarm window is accessed by clicking the "Inspections" button on the properties window, then selecting the Smoke Alarm you wish to view from the list on the Inspections at <address> Window. The Smoke Alarm Window can also be accessed from the "Smoke Alarm" button on the Incidents Window.

When you first look at the Smoke Alarm window, it will be mostly blank. To use the Smoke Alarm feature, you need to set up the fields first.

To do this, go to:

Set Up → Custom Settings → Smoke Alarms Tab.

Then you can add fields to the Smoke Alarm Screen.

CUSTOM TITLES FOR NUMBERS

These custom fields can be used to identify items requiring numeric responses. Things you might include here are:

- number of levels
- number of smoke alarms
- number disconnected
- number of dead batteries
- number of batteries missing
- number of wire disconnected
- number inoperative
- number of batteries provided
- number of smoke alarms provided

CUSTOM TITLE FOR AMOUNT

This is a currency field that you may use if desired.

CUSTOM TITLES FOR LISTS

These fields are used to title drop-down lists.

Things you might include here are:

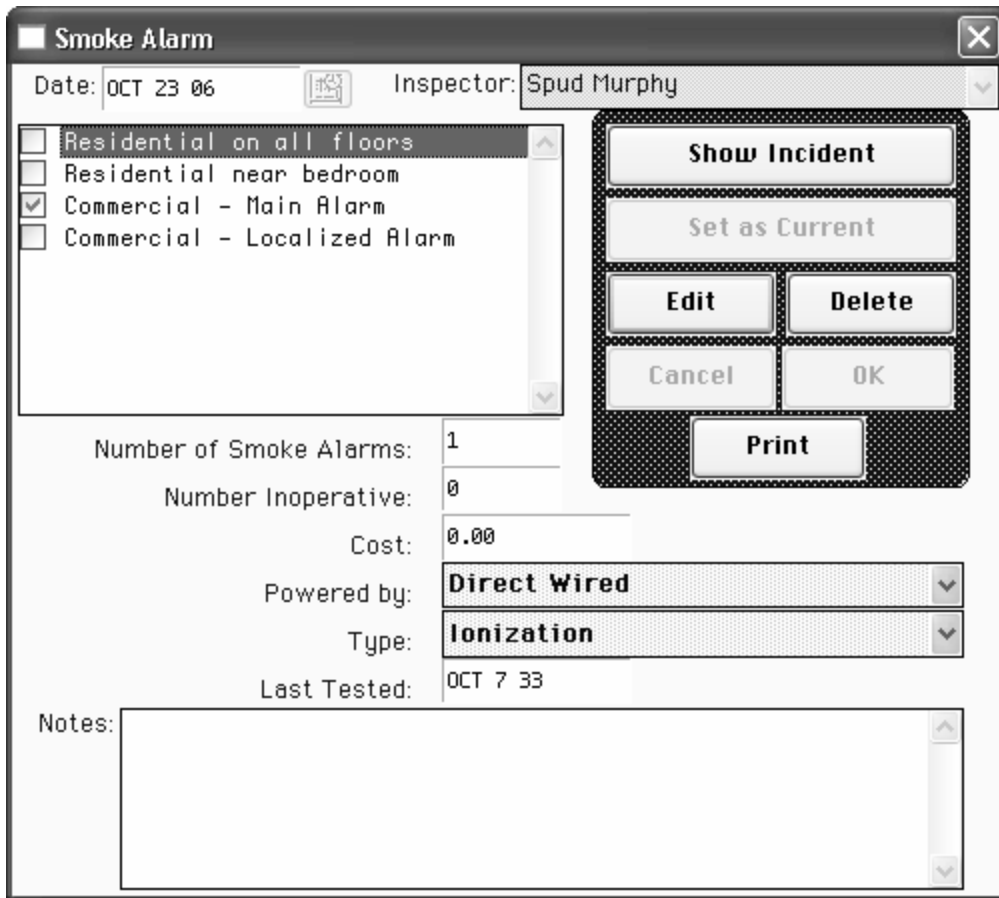
- powered by (battery, wired, inter-wired)
- type of detectors (ionization, photoelectric)
- age of detectors (0-5yrs, 5-10, etc)
- how often tested (weekly, monthly, seasonally, annually, never)

- how often cleaned (weekly, monthly, seasonally, annually, never)

CUSTOM TITLES FOR DATE

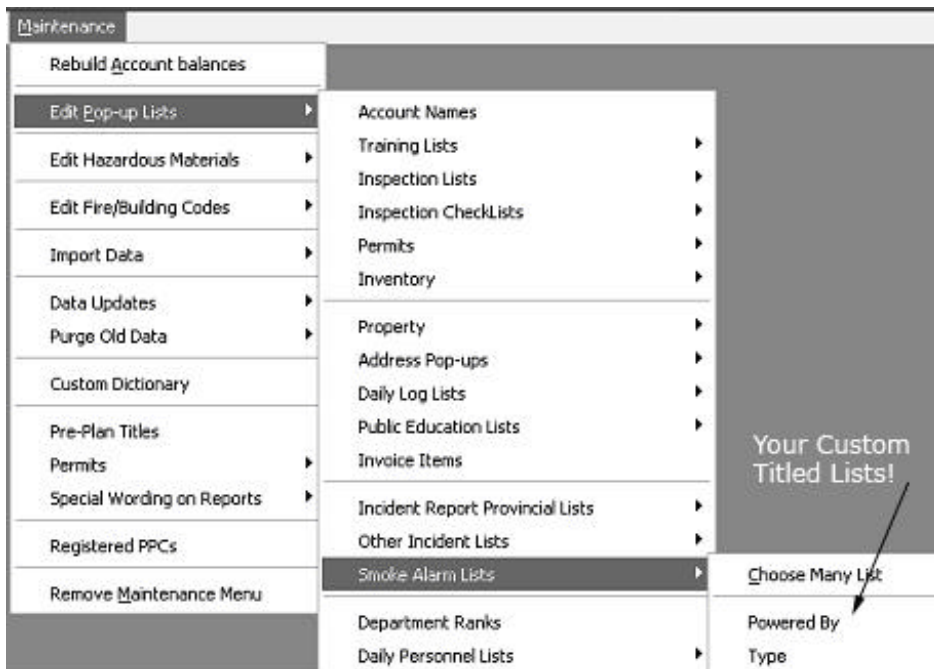
This is a date field that you may use if desired.

These titles will then appear on the Fire Alarm screen as below:



Once you have the fields set up, you need to populate them by going to: Maintenance → Edit Pop Up Lists → Smoke Alarm Lists

When you do this, you will see “Choose Many List” as well as your Custom Titled Lists that you just set up 😊



The “Choose Many List” might contain things such as:

- residential
- commercial
- all working
- alarm on every level
- bedroom doors closed
- home safety plan
- fire extinguisher
- know how to use extinguisher
- smokers

The "Results" tab will list all smoke alarms in the system for the criteria selected, while the reports will give you the details based on the type of report selected. As you can see, I have a whopping 2 smoke alarms entered in my test data! However, the report breaks everything down by the fields that I have entered into the system, so that at a glance you will be able to view in detail all the statistics for the alarms in your area.



Quote of the week:

"The computer allows you to make mistakes faster than any other invention, with the possible exception of handguns and tequila." ~ *Mitch Ratcliffe*.