

FP2 - TIP 'O THE WEEK #94

INSTALLING FONTS



Installing Fonts

There may come a time when you upgrade or get new computers, or make some other changes, and have to re-install Omnis and FirePro 2. When you do this, you will also need to install the FirePro 2 fonts.

How will you know if the fonts are installed?

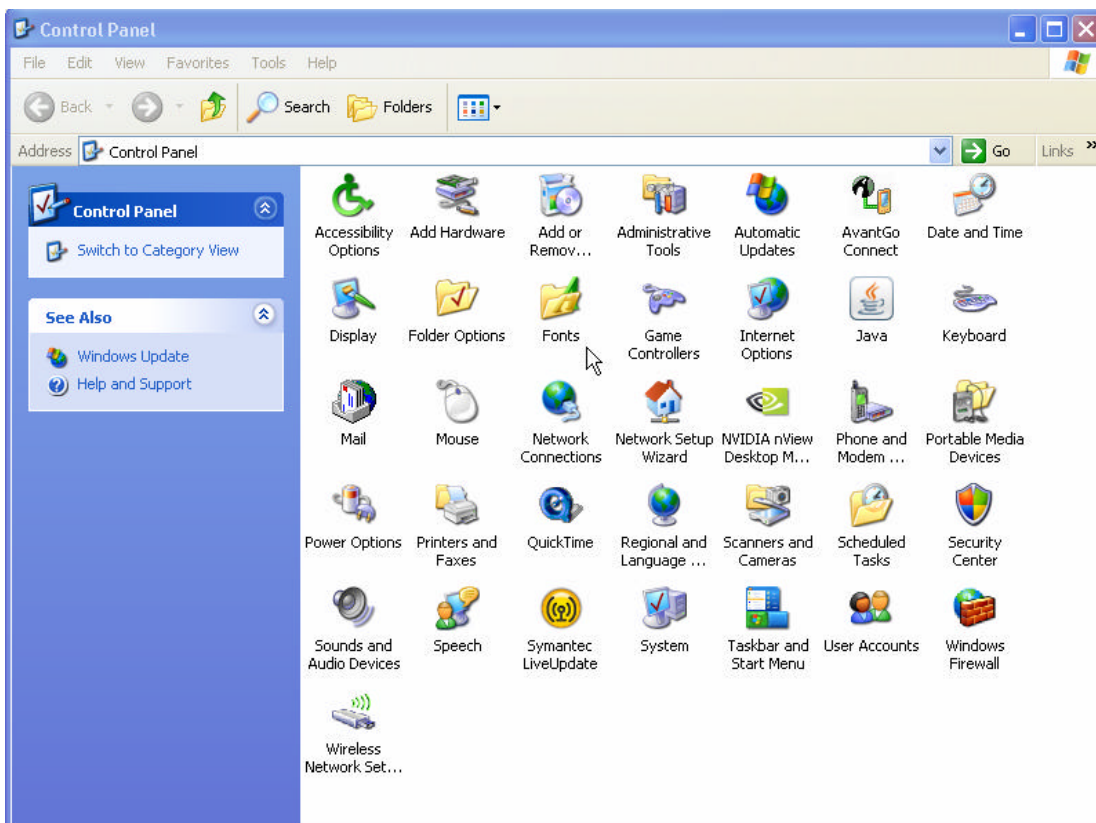
One easy way is when you log in to FirePro, you should not see your password – you should just see “****”. If you see the actual characters, then your fonts are not installed.

Also, if the fonts are not installed, the FirePro program screens will look odd, with large or disproportioned letters and numbers etc.

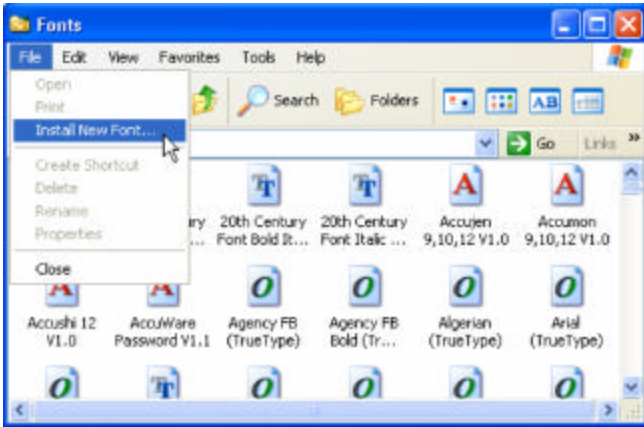
So, how do you fix this?

Be sure to install the fonts (accujen.fon, accumon.fon, accushi.fon and password.fonts) on each computer that uses FirePro.

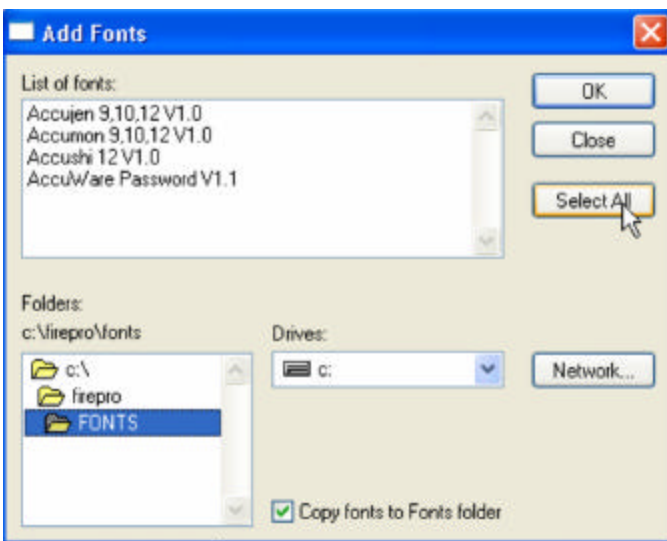
1. In the Windows Start menu, open the Control Panel.
2. Open the Fonts control panel window. If you are running Windows XP, you may need to choose the "Classic" view to see the Fonts icon.



3. Under the File menu for the Fonts window, choose "Install New Font"



4. Locate the fonts folder in your firepro folder, in the bottom left hand corner of the Add Fonts window. The four fonts will appear under the "List of fonts:"



5. Once you have located the fonts folder, click "Select All"
6. Click "OK" to install the fonts

That's it!



Quote of the week:

"The important achievement of Apollo was demonstrating that humanity is not forever chained to this planet and our visions go rather further than that and our opportunities are unlimited."

Neil Armstrong