

FP2 - TIP O' THE WEEK #73

FONTS AND COLOURS



Fonts and Colours

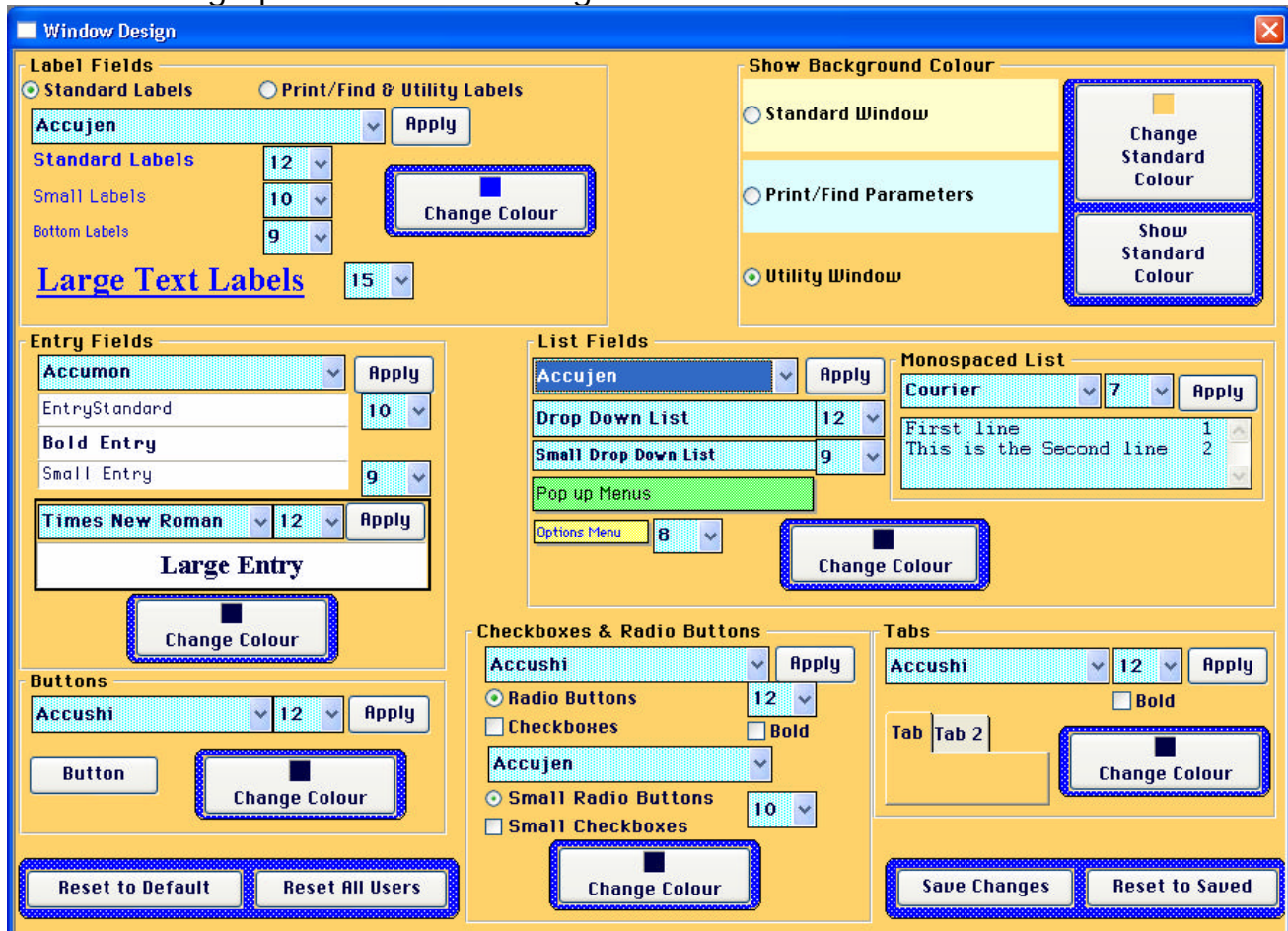
It's time to play! Starting with version 73.0, you can change the fonts, text colours, text sizes and window background colours on the windows in FirePro 2. If you don't have this yet and want it, let us know and we will send the latest version out to you.

To change the fonts and colours, go to:

File--> Window Set-up



This will bring up the Windows Design window in FirePro 2.



Fonts

In each section there is a list of fonts that are installed on your computer. Select the desired font from the list. Beside the list is where you can select the size of the font. In some sections there is more than one font list if there is more than one font used.

Monospaced List

The font you choose here should be a monospaced font (a font in which each character is the same width. i.e.: the "i" takes up the same horizontal space as an "m") so your lists will align correctly.

An example of a monospaced font is courier. To see the difference, below is the word FirePro in Courier, and below that in Verdana

FirePro

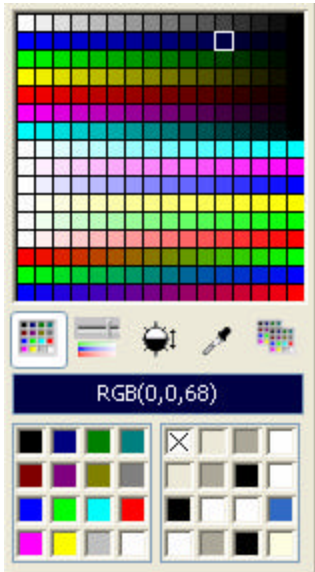
FirePro

The use of a monospaced font is important to ensure that your lists line up correctly. Once you have made a change here, click the "Apply" button to see your changes and ensure the numbers in the test area line up as the sample here.

Colours



To change the text colour, click on the "Change Colour" buttons. A colour pallet will appear and you can click on the colour you want to use.



Once you have selected a colour, the fields in that section will show the new colour. Clicking on anything other than the colour pallet will make it disappear without changing any colours.

Background Colours

The "Show Background Colour" section lets you pick the background colour of the windows in FirePro 2. Click the radio button by the colour you wish to change, then click the "Change Standard Colour" button to bring up the colour pallet (above). Clicking the "Show Colour" button will change the background colour of the window to display the colour you have selected, allowing you to preview the look for that window type.



Click the "Apply" button in the different sections of the window to see what the fonts and sizes you have selected will look like. This only offers a preview; it does not change your settings.

Saving your Changes



None of the changes you make will be saved until you click on the "Save Changes" button. If you close the window without saving changes you will be asked if you want to save the changes.

To reset the window to the settings you saved previously, click on the "Reset to Saved" button.



The "Reset to Default" button will change your settings back to the default settings.

For the administrator they will be changed to the FirePro defaults.
For other users, they will be changed to the administrator's settings.
The administrator can change all users to have the same settings as them by clicking on the "Reset All Users" button.

Customize FirePro 2 to look the way you want it! Have fun ☺



Quote of the week:

"An optimist stays up until midnight to see the New Year in. A pessimist stays up to make sure the old year leaves."

Bill Vaughan.