

FP2 - TIP 'O THE WEEK

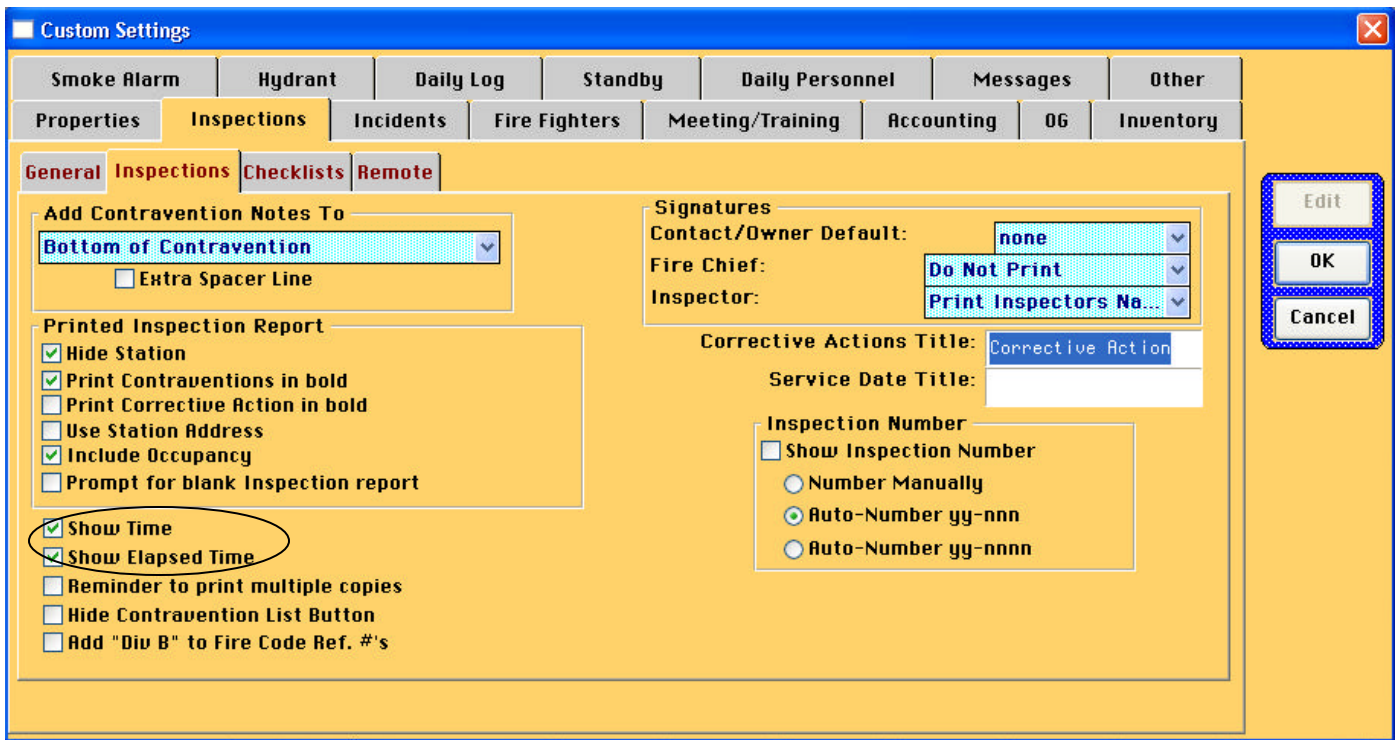
INSPECTION TIME AND LENGTH



Recording Inspection Time and Length

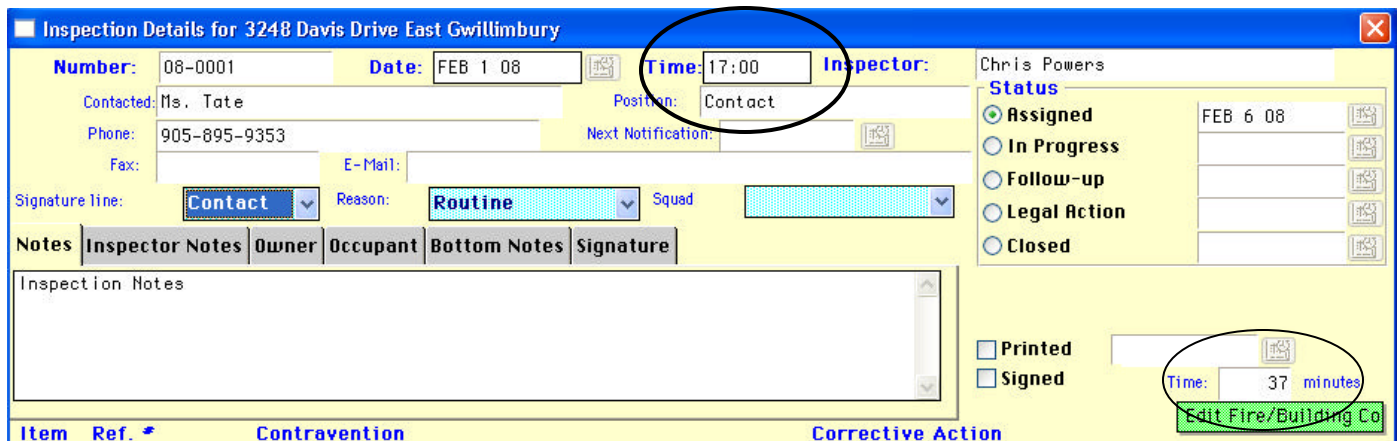
Managing fire inspections can be a significant challenge for any department, as they are a time-consuming and ongoing task. We have recently added fields to the Classic Inspection report that allow you to track both the time that an inspection was performed and the length of time that the inspection took, and to generate reports with this information.

To set up the Inspection window to record times, go to:
Set-Up-->Custom Settings-->Inspection Tab-->Inspections Sub-Tab.



Turn on the Show Time option to record the time that an inspection starts.
Turn on the Show Elapsed Time option to record the duration of an inspection.

The next time you open an inspection report, 2 new fields will be visible:

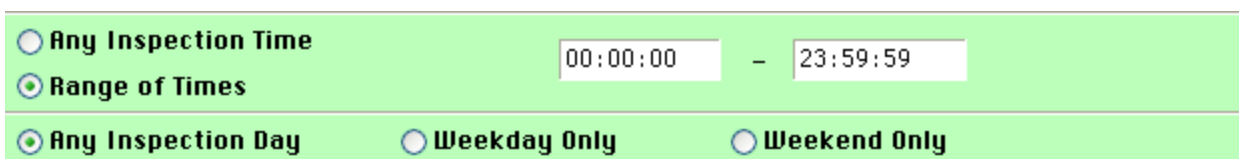


The Time field at the top of the Inspection next to the date uses a 24-hour clock to record the time that the inspection is done.

The Time field on the lower right records the duration of the inspection in minutes.

Once you have entered Inspection start times, you can use the Inspection Time parameter to generate reports:

Go to the Reports-->Management Reports-->Inspections report.



Setting the Inspection Time parameter allows you to select all inspections that start within a specific range of times. Combined with the Inspection Day parameter, you can search for all inspections that occurred during regular business hours, or on evenings and weekends, for example.



Quote of the week:

“Getting information off the Internet is like taking a drink from a fire hydrant”

Mitchell Kapor